



SECTIONS

- [News](#)
- [Features](#)
- [Reviews](#)
- [Trick Tips](#)
- [Wakeskating](#)
- [Slider Plans](#)
- [Wake Thoughts](#)
- [Forums](#)
- [E-mail](#)
- [Event Schedule](#)
- [Glossary](#)
- [Trick List](#)
- [Giveaways](#)
- [Video Music](#)
- [Newsletter](#)
- [Article Alert](#)
- [Links](#)
- [Link To Us](#)

How To Build 6 x 9 Speaker Tubes

Brought To You By:

Ray Evans

revans4@optushome.com.au



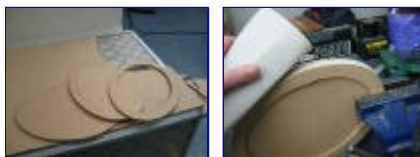
Materials Needed: 1/4" (6mm) MDF, Glue, 4 x U-Bolts, Rivets, 0.5mm Aluminum Sheet and Fiberglass.

Tools Need: Jig Saw, Sand Paper, Rivet Gun, Drill, Glue, Clamp and Ruler.

Cost: MDF- \$4.00, U-Bolts- \$10.00, Aluminum Sheet- \$10.00, Fiberglass Kit- \$20.00, Upholsterer \$40.00
Total Cost: \$84.00

Instructions Per Speaker

Step 1- You will need a template of your speaker. Cut out three pieces of MDF to the shape of your speaker. The speaker side (face) will need to be cut out for your speaker to fit. Clamp all three pieces and sand the edges so they are smooth and even. As you can see we used a vise to keep our pieces together. Keep them clamped for now.



Step 2- Measure to see how long you want the speaker tube to be. Then cut two pieces of MDF 1" (25mm) x (length of speaker). With the sections still clamped cut 1" notches off the top and bottom of the main three pieces so the two length piece can be fitted. Now unclamp them and glue them together as

- OPTIONS -

[E-mail Article](#)

[Comments?](#)

[Article Alert](#)

[Newsletter Sign Up](#)

MEDIA

- [Pictures](#)
- [Video Clips](#)
- [Radio](#)

COMMUNITY

- [General Talk](#)
- [Trick Talk](#)
- [Wakeskate Talk](#)
- [Boat Talk](#)
- [Slider Talk](#)
- [Classifieds](#)
- [Non-Wake](#)
- [Snowboarding](#)
- [Skateboarding](#)
- [All Forums](#)
- [Live Chat](#)

PRODUCTS

- [All Products](#)
- [Posters](#)
- [T-shirts](#)
- [Stickers](#)

SPONSORS

OP

Did you watch this

tricks more

many to.

Vol

Sul

- [Glc](#)
- [Tot](#)
- [He](#)
- [Ric](#)
- [Leg](#)
- [TS](#)
- [HS](#)
- [Bu](#)
- [HS](#)



shown. "Make sure the depth of your notches match up with the thickness of your MDF. In this case we used 1/4" thick material."

- [Oll](#)
- [Me](#)
- [Su](#)

IN

- [HS](#)
- [Ha](#)
- [Inc](#)
- [Sci](#)
- [BS](#)
- [Ba](#)
- [TS](#)

TA

- [Ta](#)
- [Wt](#)
- [Frc](#)
- [Ele](#)
- [Crc](#)
- [He](#)
- [Wr](#)

GE

- [Ge](#)
- [HS](#)
- [BS](#)
- [FS](#)
- [Su](#)

WAKE LIST

- [Wake List Info](#)
- [Subscribe](#)
- [Unsubscribe](#)
- [Northwest List](#)

OTHER STUFF

- [Advertise](#)
- [Contribute](#)
- [Site Feedback](#)
- [Staff](#)
- [Privacy Policy](#)
- [Wakeboarding](#)

FREE E-MAIL

- [Check E-mail](#)

NEWSLETTER

Your E-mail

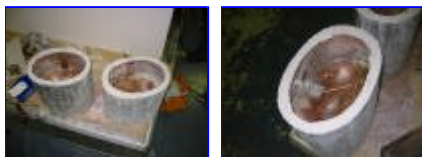
Subscribe



Step 3- On the aluminum sheet, drill four evenly spaced holes making sure there is a hole at each end of the tube. Rivet the sheet to the 1" piece of MDF, wrap the sheet all the way around and repeat for the other side. Try to minimize the gap where the two ends meet. If you have aluminum sheet overhanging from the tube, you could trim them off with scissors.



Step 4-To give it strength and for waterproofing purposes, fiberglass the inside and outside of the tube. Then sand the outside to get rid of the sharp edges and to make it smooth.



Step 5- If the finishing of the tube is to your liking, you may want to cover it with gel coat. In this case I went for marine grade vinyl. I had to send this one away to get it covered by professionals. They also lined it with sponge to give it more cushion and to hide away any errors.



Step 6- Measure the size of the pipe diameter where you want this Speaker to be mounted and purchase the right sized U-Bolts Stainless or Aluminum. If you're going to cover the U-Bolts you may want to go slightly bigger. I covered my U-Bolts with black automotive vacuum hose to stop it from scratching and rattling. Drill 4 holes how you want your tube to be fitted and bolt them up.



The End Results!



Copyright © 2002 - Wakeboarder.com - All Rights Reserved